

GM = 1 NO.
 DGM = 4 NOS.
 STAFF = 407 NOS.

TOTAL BANK STAFF = 412 NOS.

MEETING ROOMS = 5 NOS.

G.M.-

GM : 1 NO.
 GM CABIN SIZE : 19'-2" X 12'-2"
 GM TABLE SIZE : 7'-0" X 3'-6" X 2'-6"
 GM SIDE CREDENZA : 4'-0" X 1'-6" X 2'-6"
 GM BACK CREDENZA : 10'-9" X 1'-6" X 2'-6"
 GM SOFA 3 SEATER : 6'-6" X 2'-8" X 3'-0"
 GM SOFA 1 SEATER : 2'-8" X 2'-8" X 3'-0"

D.G.M.-

DGM : 4 NOS.
 DGM CABIN SIZE : 10'-7" X 12'-2"
 DGM TABLE SIZE : 6'-0" X 3'-0" X 2'-6"
 DGM SIDE CREDENZA : 4'-0" X 1'-6" X 2'-6"
 DGM BACK CREDENZA : 10'-7" X 1'-6" X 2'-6"
 DGM SOFA 3 SEATER : 5'-9" X 2'-6" X 3'-0"

MEETING ROOM-

MEETING ROOM : 5 NOS.
 MEETING ROOM SIZE : 10'-6" X 12'-2"
 MEETING TABLE SIZE : 5'-0" X 3'-0" X 2'-6"

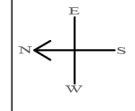
STAFF-

STAFF : 407 NOS.
 STAFF TABLE SIZE : 4'-0" X 2'-0" X 2'-6"

NETWORK ROOM-

NETWORK ROOM : 2 NOS.
 NETWORK ROOM SIZE: 9'-10" X 12'-1"

PROPOSED INTERIOR LAYOUT
OF STATE BANK OF INDIA'S 5TH FLOOR A & B WING, SBI GITC, CBD BELAPUR



Date: 13.03.2024

DRG NO:
 AA/SBI/GITC/5FLR/02
 DRAWN BY:
 AKSHATA GAWADE
 CHECKED BY:
 RAMESH SHENOY

PRADIP SHENOY. AKSHATA SHENOY. RAMESH SHENOY.
ARCHITECTS APPROACH
 20,SHREEDHAR, HANUMAN ROAD, VILE PARLE (EAST),
 MUMBAI - 400 057. TELE: 022-35113986, 022-35113988.